

November 1, 2009

**Dear Amsterdam/Churchill Area Resident / Landowner;**

After a year and a half of work, we are excited to announce the release of the Amsterdam/Churchill Community Plan. As many of you know, the plan is a product of two years of community discussion and research. The process has been led by the Amsterdam/Churchill Community Planning Group, a volunteer steering committee working with the Gallatin County Planning Department to learn about and discuss ways to manage growth and change in the Amsterdam/Churchill area.

The planning process began with a kickoff community event in November 2007; that event led to the identification of five Guiding Principles:

- Preservation of small town values, rural character, and quality of life;
- Protection of the area's agriculture heritage and wide-open views;
- A commitment to improving community infrastructure;
- Preservation of the area's agricultural and rural lifestyle;
- Protection of community values;
- Increased local control in managing growth and change.

The ACCPG has met for the past two years, hosting several community events, meeting twice a month for committee meetings while turning these Guiding Principles into the first-ever Amsterdam/Churchill Community Plan. **There will be a community event on November 10 at 7 pm in the old gym at Manhattan Christian School to discuss the draft plan.** Please bring any questions you have.

You may pick up a copy of the draft plan at one of the following locations:

- The ACCPG website at <http://amsterdamchurchillcommunityplan.com/>
- Gallatin County Planning Department's Website at <http://www.gallatin.mt.gov/planning> under "What's New and Happening Now?"
- The Amsterdam Store
- The Churchill Bank
- Churchill Implement
- Danhof Chevrolet

There are two other dates to be aware of:

- **November 24 at 6pm:** The plan will be heard by the **Gallatin County Planning Board**
- **December 8 at 9 am:** The plan will be heard by the **Gallatin County Commission.** Both meetings will be held in the Community Room of the Gallatin County Courthouse.

Please feel free to call with any questions or input you may have. Thanks for your participation.

*Walt Sales, 570-2128*

*Bob Urich*

*Tim Van Dam*

*Brent Sinnema*

*Carol Weidenaar*

*Amy Waring*

*Jason Kimm*

*Leroy Logterman*

*Gail Weidenaar*

*Ashley Jones*

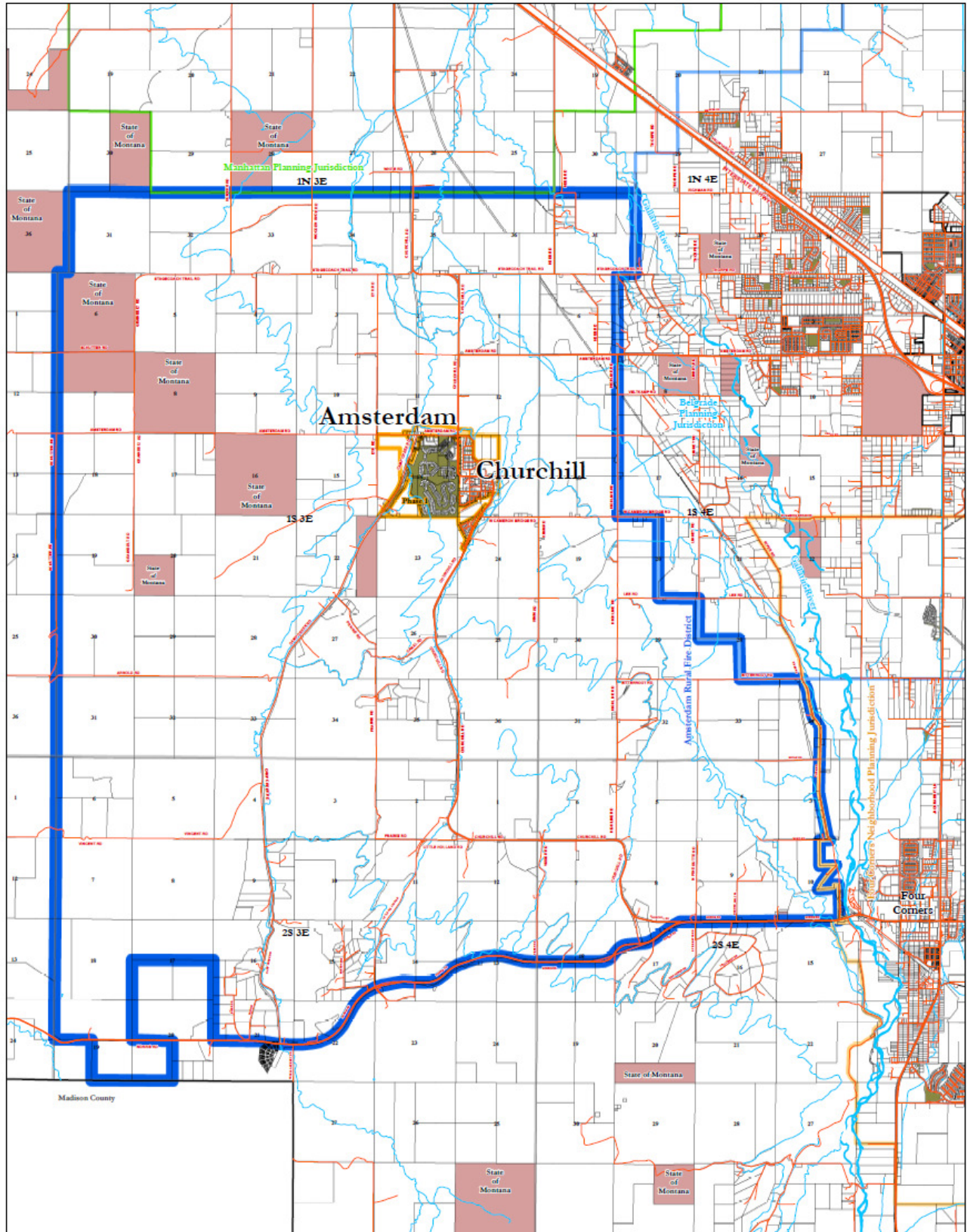
*Dean Sybesma*

*Warren Vaughan (County Planning)*

# Proposed Amsterdam-Churchill Neighborhood Planning Area

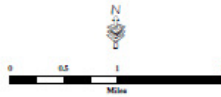
Gallatin County, MT

DRAFT  
10/29/2009



NOTE: This map is a visual representation only and does not represent a survey. No liability is assumed as to the accuracy of the data delineated hereon.

-  Proposed Amsterdam Churchill Neighborhood Planning Boundary
-  DRAFT Amsterdam Churchill Core Area
-  Belgrade Jurisdictional Boundary
-  Manhattan Jurisdictional Boundary
-  Four Corners Planning Jurisdiction
-  State Lands
-  Existing and Proposed Open Space and Parks



MAP PREPARED BY  
GALLATIN COUNTY, MT  
GEODEPARTMENT AND  
PLANNING DEPARTMENT  
03/12/2007, 10/29/2009  
12\_20091029\_churchill\_area\_0908\_000.mxd