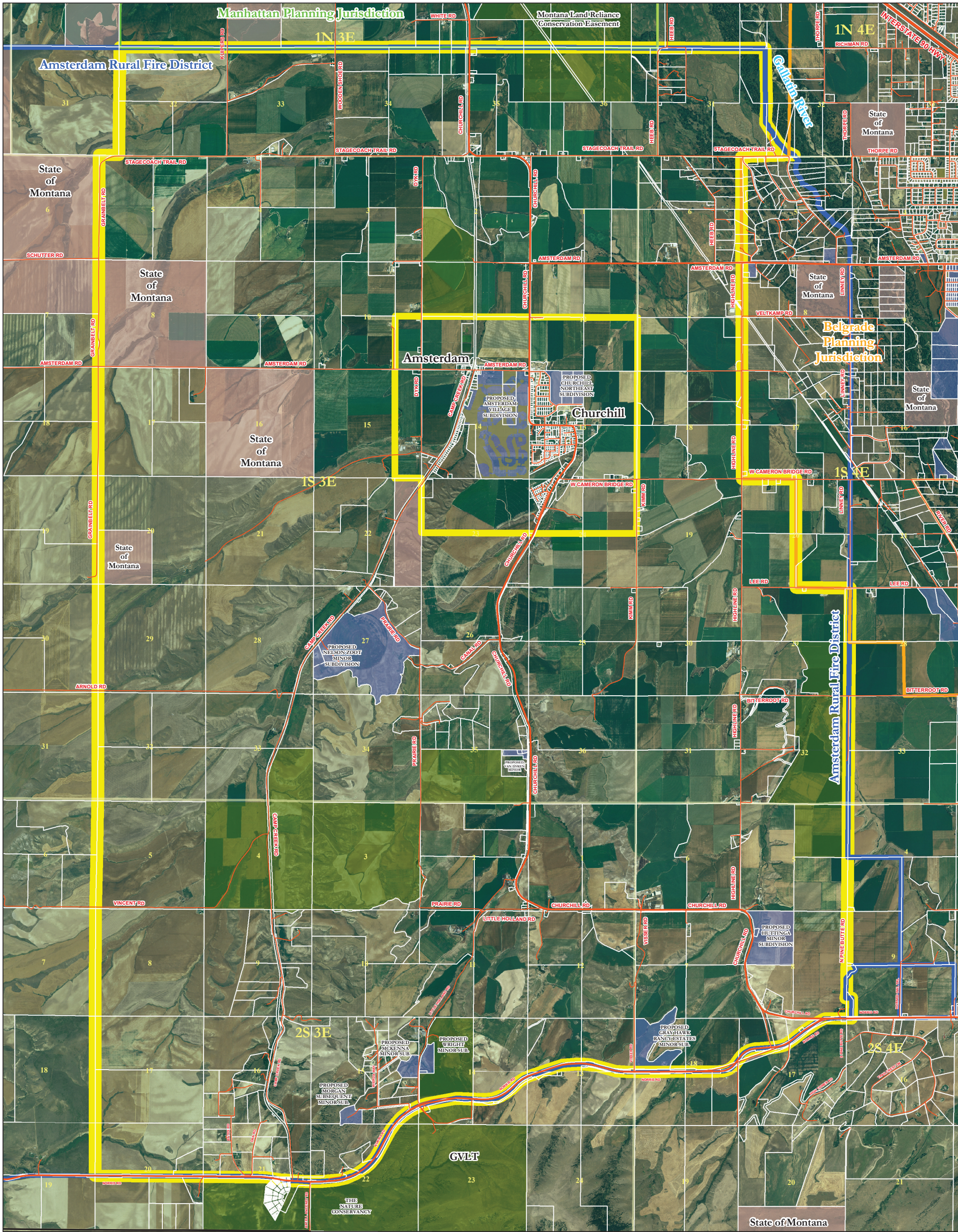


# Proposed Amsterdam-Churchill Neighborhood Planning Area

Gallatin County, MT

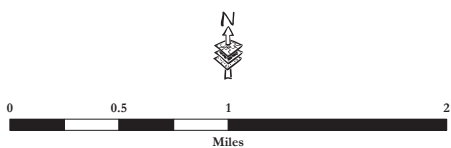
DRAFT  
03/17/2008



NOTE: This map is a visual representation only and does not represent a survey. No liability is assumed as to the accuracy of the data delineated hereon. Aerial imagery from 2005 National Agriculture Imagery Program.

- Proposed Amsterdam Churchill Neighborhood Planning Boundary
- DRAFT Amsterdam Churchill Core Area
- Amsterdam Rural Fire District
- Belgrade Jurisdictional Boundary
- Manhattan Jurisdictional Boundary

- State Lands
- Conservation Easements
- Existing and Proposed Open Space and Parks
- Proposed Subdivisions Currently Pending Review



MAP PREPARED BY  
GALLATIN COUNTY, MT  
GIS DEPARTMENT AND  
PLANNING DEPARTMENT  
03/12/2007 ; 03/17/2008

bw\_20080317\_churchill\_area\_with\_core\_2005\_NAIP.mxd