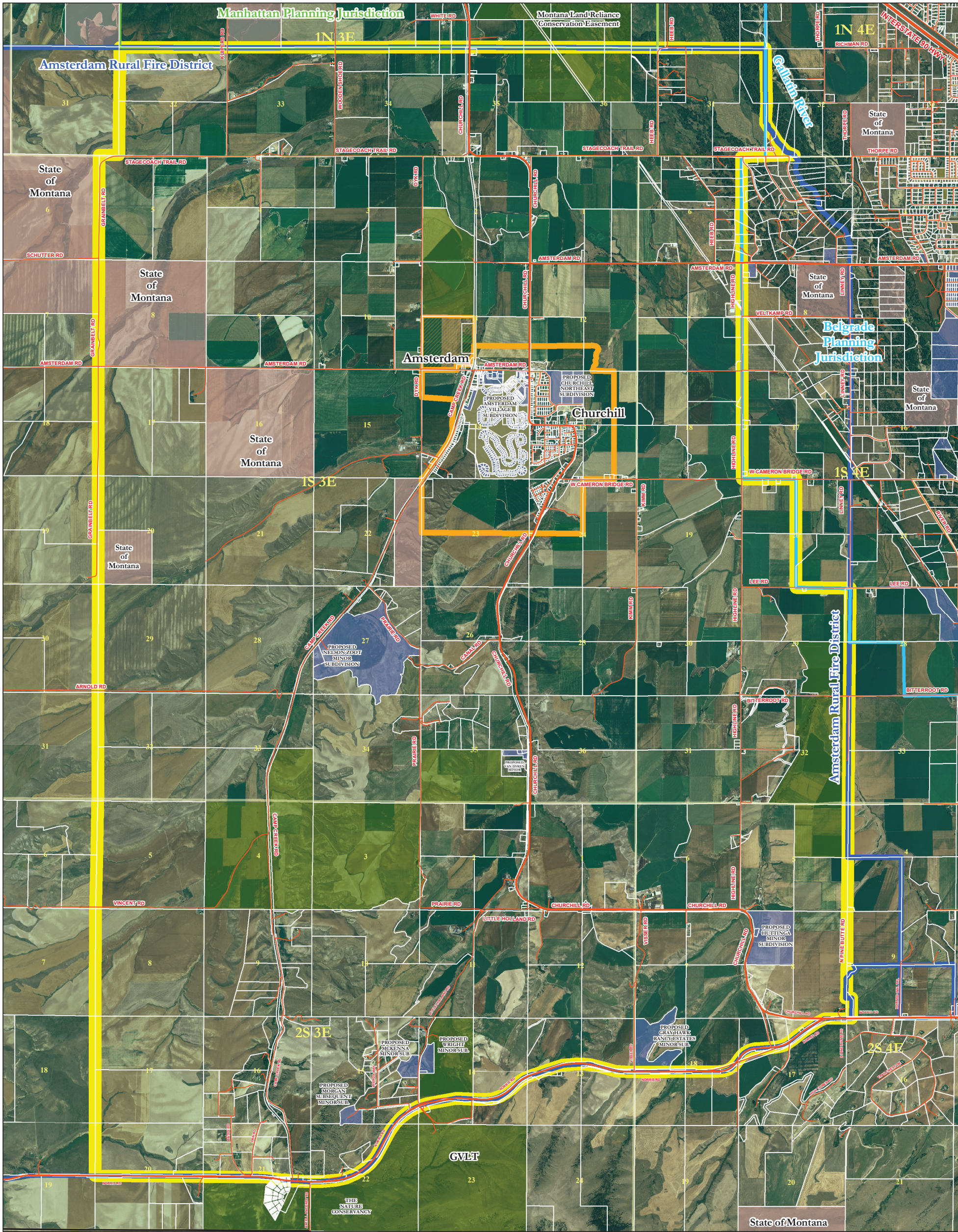


Proposed Amsterdam-Churchill Neighborhood Planning Area

Gallatin County, MT

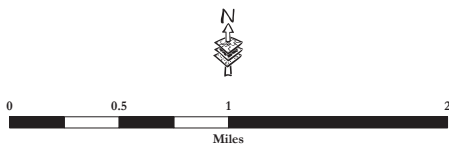
DRAFT
04/22/2008



NOTE: This map is a visual representation only and does not represent a survey. No liability is assumed as to the accuracy of the data delineated hereon. Aerial imagery from 2005 National Agriculture Imagery Program.

- Proposed Amsterdam Churchill Neighborhood Planning Boundary
- DRAFT Amsterdam Churchill Core Area
- Amsterdam Rural Fire District
- Belgrade Jurisdictional Boundary
- Manhattan Jurisdictional Boundary

- State Lands
- Conservation Easements
- Existing and Proposed Open Space and Parks
- Proposed Subdivisions Currently Pending Review



MAP PREPARED BY
GALLATIN COUNTY, MT
GIS DEPARTMENT AND
PLANNING DEPARTMENT

03/12/2007 ; 04/22/2008
bw_20080422_churchill_area_with_core_2005_NAIP.mxd