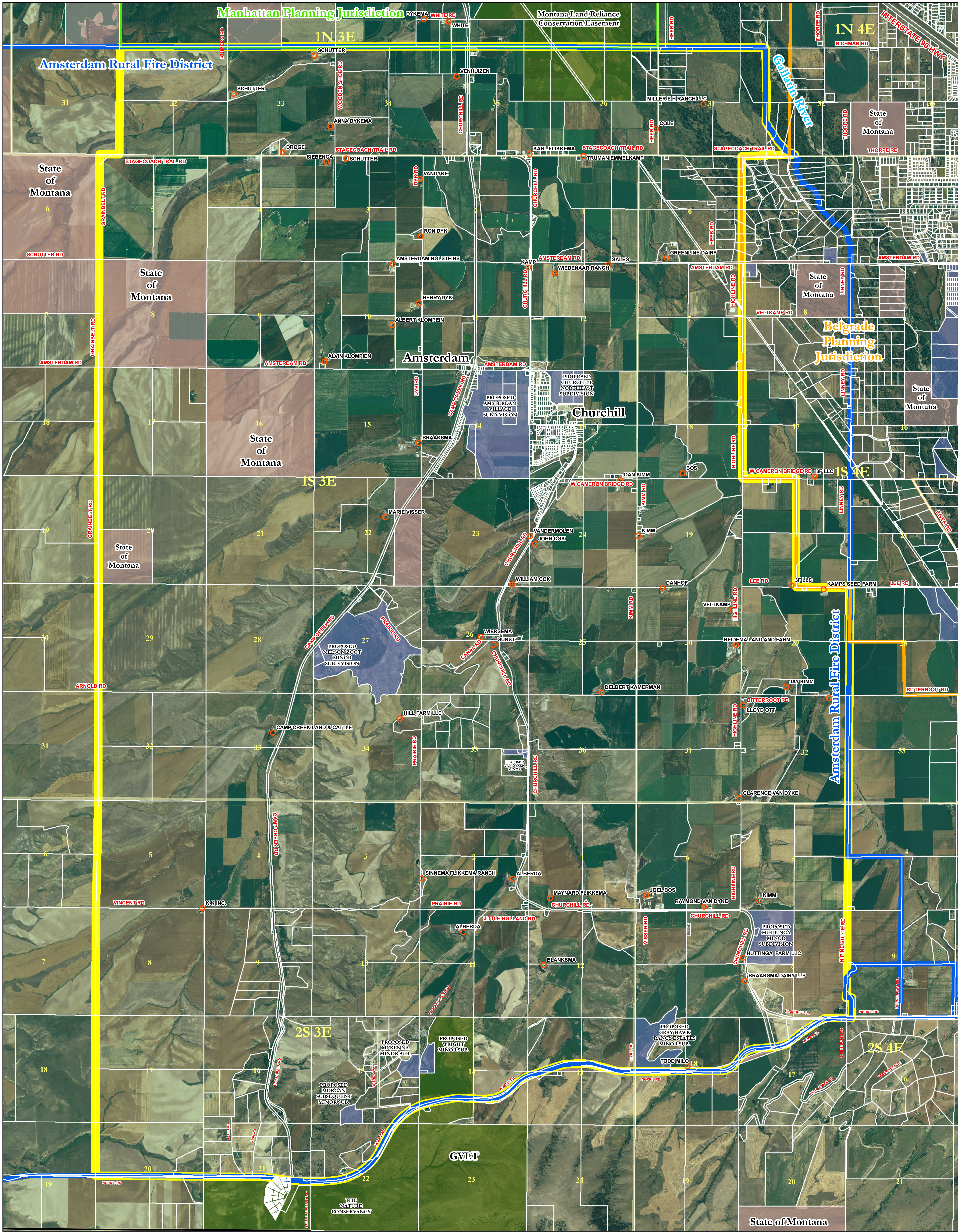


Proposed Amsterdam-Churchill Neighborhood Planning Area

Gallatin County, MT

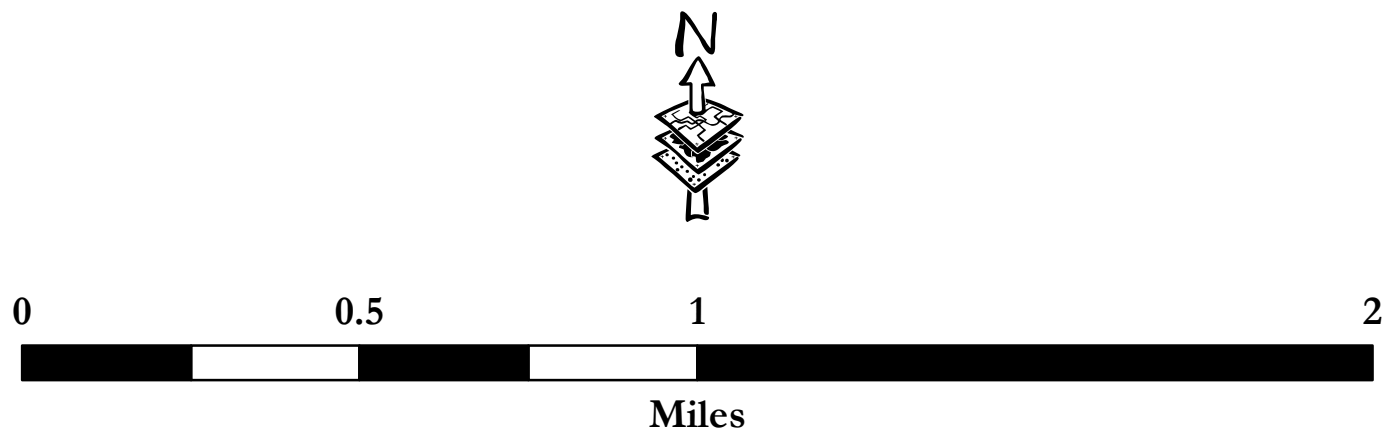
DRAFT
01/09/2008



NOTE: This map is a visual representation only and does not represent a survey. No liability is assumed as to the accuracy of the data delineated hereon. Aerial imagery from 2005 National Agriculture Imagery Program.

- Parcels
- Incorporated Cities and Towns
- Amsterdam Rural Fire District
- Belgrade Jurisdictional Boundary
- Manhattan Jurisdictional Boundary
- Proposed Amsterdam Churchville Neighborhood Planning Boundary

- State Lands
- Federal Lands
- Conservation Easements
- Open Space and Parks
- Proposed Subdivisions Currently Pending Review
- Farmsteads



MAP PREPARED BY
GALLATIN COUNTY, MT
GIS DEPARTMENT AND
PLANNING DEPARTMENT
03/12/2007 ; 01/09/2007

bw_20080109_amsterdam_churchill_area_farmsteads_2005_NAIP.mxd